



# TURNING THE PAGE



The Max  
Foundation

2017 Annual Report



As part of the Max Global Experience, Pat climbed Mount Kinabalu in Malaysia in support of patients.

Our **vision** is a world where all people facing cancer live with dignity and hope.

Our **mission** is to increase global access to treatment, care, and support for people living with cancer.



Dear friends,

This was a landmark year at The Max Foundation. We reflected on our past, applied lessons learned over two decades, and turned the page to an exciting new chapter in the life of our organization – an innovative, humanitarian, access-to-treatment model we call **Max Access Solutions**.

Though we were celebrating our 20th anniversary, 2017 still brought us many firsts. From building out our supply chain capabilities and becoming a licensed wholesaler, to maintaining drug inventories and visiting more than 50 partner sites, we wrote a new script for ourselves at every turn. Driven by the unmet needs of people facing cancer around the world, we implemented an organizational transformation that will allow us to better serve the patients we support and, one day, scale our treatment access model across every type of cancer.

For much of our history, we’ve managed patient access programs in partnership with pharma companies. In fact, we first began our treatment access work by co-developing a drug delivery model with Novartis – the Glivec® International Patient Assistance Program (GIPAP) – back in 2001. GIPAP, and programs like it, allowed us a unique opportunity to help patients. Yet, throughout the GIPAP years, we dreamed that one day we would be able to provide access for our patients to any medicine they needed, beyond Glivec®.

Today, this dream has come true. In 2017, moving away from the drug-centric approach, we implemented a new model that would be truly patient-centric: **Max Access Solutions**. In our new model, we have a way to offer multiple therapies to the same patient as prescribed by their doctor – and a way for any company that is willing to help to join in our mission.

We now offer a portfolio of eight, innovative, high-quality medicines to cancer patients in low- and middle-income countries through a collaborative mechanism I call our Humanitarian Partnership for Access to Cancer Treatment (PACT); and for those patients living with chronic myeloid leukemia (CML), we are able to channel any treatment otherwise only available in high-income countries.

This Humanitarian PACT has already been a dream come true. Now we have a new dream. Our dream is a world where every manufacturer of cancer treatment is part of our PACT, and together we ensure that, to the extent that patients can safely be treated in countries with no other form of local access, we activate the Max Access Solution so no patient goes without medicine.

I am so proud of all we’ve accomplished in 2017 – and in our first 20 years as an organization. As you read our annual report, I hope you are too. We couldn’t have done it without you. Thank you for your continued support as we turn the page to our next 20 years.

In partnership,

Pat Garcia-Gonzalez,  
CEO of The Max Foundation

CEO Letter	3
Max Access Solutions	4
Doctors	6
Medicine	8
Shipping	10
Support	12
2017 at a Glance	14
Financials	16
Community Fundraising	18
Our Team	20
Patient Associations	22
20 Years of Dignity & Hope	24
Turning the Page	26



# Max Access Solutions

At The Max Foundation, we believe everyone deserves access to cancer treatment – no matter who they are or where they live. So, in 2017 we launched an innovative patient-centered model for delivering cancer treatment to those in need: Max Access Solutions.

Focused specifically on low- and middle-income countries, Max Access Solutions allows us to deliver targeted cancer treatments to patients who would have no other way to access them. Thanks to a proprietary, real-time, patient-tracking tool and our global system of collaborations, we're able to deliver the right treatment to the right patient in the right dose at the right time.

In 2017, our first full year turning the page to Max Access Solutions, we successfully delivered 713,695 daily doses of cancer medication to 11,017 patients in 66 countries. In the years to come, we aim to complete the transition and move all the patients we currently support into this new model.

## A New Path

In 2017, our longtime partnership with Novartis was reimagined as a best practice collaboration called **CMLPath to Care™**. Implemented under the umbrella of Max Access Solutions, the contribution of CMLPath to Care™ is enormous. Of the 700,000+ daily doses we distributed in our first year, 91% were Novartis' transformative treatment, Glivec®.

WRAPAROUND  
Support

NETWORK OF  
Doctors

## A Patient-Centered Model

A patient-centered model means we can offer multiple treatment options for the same disease. So when Alassane – a husband and father from Senegal – needed to change medications, he was able to get a second-line treatment through Max Access Solutions.

SHIPPING &  
Logistics

DONATED  
Medicine

Turn the page to learn more  
about each component of  
Max Access Solutions





# Network of Doctors

Doctors are the access point through which patients enter Max Access Solutions. When a doctor diagnoses a patient with cancer and prescribes a drug that's not available locally, they set our access solution in motion.

From there, a complex system is activated: donated medicines leave the manufacturing plant, get routed through our validated supply chain, to our partner institutions, and into the patient's hand. Though we only launched Max Access Solutions in January of 2017, by the end of the calendar year we had added more than 220 doctors around the globe to our network.

We're proud to be affiliated with so many dedicated doctors and healthcare providers. They form the front line in bringing dignity and hope to people facing cancer. Without them, we could never achieve our mission. We look forward to adding more ways to support these key partners as our transition to Max Access Solutions continues.



*"I had the honor of meeting Dr. Kazakbaeva in Uzbekistan and accompanied her on several home visits to treat patients and deliver their medicine. It was so humbling to see the strong relationships she has built with each one. Like all the physicians in our network, Dr. Kazakbaeva serves as an inspiration to do all we can for patients."*

*—Erin Lindsay Schneider, Senior Program Manager, USA*

## The “Mother Teresa of Uzbekistan”

Meet Dr. Khamida Kazakbaeva. Lovingly known as the “Mother Teresa of Uzbekistan” among those she supports, she has dedicated her life to her patients.

She is the only trained hematologist in her region, so many of her patients must travel hundreds of miles to see her for checkups and refilling medications. To lessen the burden on them, Dr. Kazakbaeva created a biannual fundraiser called “Closer to Patients, Closer to Max.” She uses the money raised to fund her travel to four strategic areas around the country, setting up a mobile clinic in each where local patients can visit her nearby, rather than making the days-long journey to Tashkent.

We at The Max Foundation are humbled by Dr. Kazakbaeva's dedication, and honored to help her bring dignity and hope to people facing cancer in Uzbekistan.





**MAX ACCESS SOLUTIONS**

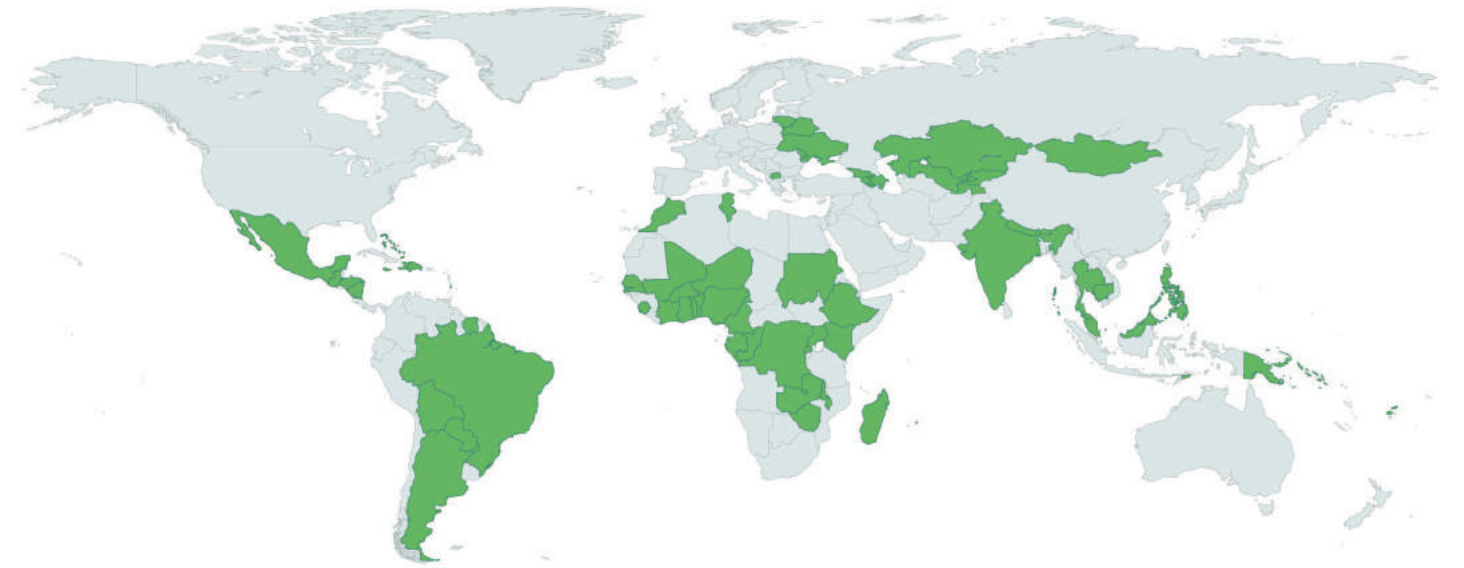
## Donated Medicine

Max Access Solutions is all about providing dependable access to quality treatments that would otherwise be unavailable. To that end, we've partnered with pharmaceutical companies who generously provide the prescribed medication for the patients we support.

Having multiple partners allows us to offer multiple targeted therapies – empowering doctors and patients to make choices about treatment. And, as our drug portfolio has grown, so have the disease areas in which we work.

When we first launched The Max Foundation 20 years ago, our focus was on rare blood cancers. Today, we also offer therapies for gastrointestinal stromal tumors (GIST), renal cell carcinoma (RCC), and non-small cell lung cancer. Our next goal is to continue to expand the portfolio of medications available in every country in which we work.

In 2017, 66 countries gained access to cancer treatment through Max Access Solutions.



## A Pact for Access

Five multinational pharmaceutical companies have joined with us to forge a Humanitarian Partnership for Access to Cancer Treatment (PACT) – a commitment to providing cancer medicine to patients in low- and middle-income countries who would have no other means of access. Each company within the PACT has committed to providing access for a different number of patients within their capabilities, but all have committed their support for as long as each patient needs it.

### NOVARTIS

Glivec®  
Tasigna®

### TAKEDA

Iclusig™

### BRISTOL-MYERS SQUIBB

Sprycel™

### INCYTE

Iclusig™

### PFIZER

Sutent®  
Bosulif®  
Torisel®  
Xalkori®



*A cancer patient from Nepal receives his medication after a diagnostic test ensures his treatment is working.*





## MAX ACCESS SOLUTIONS

# Shipping & Logistics

Our partnership with the dedicated team at **Tanner Pharma Group** allowed us to grow our shipping capacity rapidly in 2017. In January, we were only distributing medicine to a handful of countries, but by year's end, that number had grown to 66.

With Tanner's help – and in Max Access Solution's inaugural year – we successfully delivered 147 shipments of targeted cancer medications to doctors and clinics the world over; monitoring their safety and quality from end-to-end along our validated supply chain.

And, we overcame some major barriers along the way: an earthquake, a volcanic eruption, and a political revolution; yet we endured and successfully delivered the needed medication to our patients.

*"Without The Max Foundation's effort in bringing the treatment access program to our hospital, patients in East Malaysia would have to travel to the capital of our country (only by air) to receive treatment for their cancer. This is an impossible journey for many to make on a regular basis, which would leave them with no access to treatment at all! Thanks to you, they have the care they need, but also, they have hope."*

–Dr. Lu Chee Men,  
Queen Elizabeth II Hospital, Malaysia



## Partner Hospitals and Clinics

In 2017, we established a validated supply chain into 98 cancer-treating institutions around the world.

Republican Haematology Centre · Armenia	Institut de Cancerologie Angondje · Gabon	Hospital Raja Permaisuri Bainun · Malaysia	Hospital de Clínicas · Paraguay
Inst. of the Rep. of Azerbaijan on Tranfusiology and Hematology · Azerbaijan	Hematology and Chemotherapy Clinic "HEMA" · Georgia	Hospital Sibü · Malaysia	Philippine General Hospital · Philippines
Hematology Oncology Consultants · Bahamas	Tbilisi Gov. Inst. of Hematology and Transfusion · Georgia	Hospital Sultanah Aminah · Malaysia	Univ. of Santo Tomas Hospital · Philippines
Belorussian Hematology and Bone Marrow Transplant · Belarus	Komfo Anokye Teaching Hospital · Ghana	Hospital Tengku Ampuan Afzan · Malaysia	Centre Hospitalier et Univ. de Brazzaville · Republic of Congo
Centre National Hospitalier Universitaire Hubert K. MAGA · Benin	Korle-Bu Teaching Hospital · Ghana	Hospital Umum Sarawak · Malaysia	Rwanda Military Hospital · Rwanda
Jigme Dorji Wangchuck National Referral Hospital · Bhutan	Zanmi Lasante · Haiti	Subang Jaya Medical Centre · Malaysia	Rwinkwavu District Hospital · Rwanda
Clínica Los Olivos · Bolivia	Centro de Cancer Emma R. De Callejas · Honduras	Service d'Hématologie Oncologie Médicale · Mali	Victoria Hospital · Saint Lucia
Diagnosis Instituto de Medicina · Bolivia	Apollo Speciality Hospital (Delhi) · India	Victoria Hospital Candos · Mauritius	Hospital Dalal Jamm · Senegal
Hospital de Clínicas Universitario · Bolivia	Rajiv Gandhi Cancer Institute & Research Ctr. · India	Hosp. Central de San Luis Potosí "Dr. Morones Prieto" Mexico	Seychelles Hospital · Seychelles
Hospital Universitario Santa Bárbara · Bolivia	Sir Ganga Ram Hospital · India	Hosp. Chiapas nos Une "Dr. Gómez Maza" · Mexico	Connaught Teaching Hospital · Sierra Leone
Instituto Boliviano de Oncohematología · Bolivia	VPS Lakeshore Hospital · India	Hospital General de Mexico · Mexico	National Referral Hospital · Solomon Islands
Instituto Oncologico del Oriente Boliviano · Bolivia	Cornwall Regional Hospital · Jamaica	Hospital General de Occidente, Secretaria de Salud · Mexico	The Radiation and Isotope Centre · Sudan
Centro de Hematologia e Hemoterapia – U. Estadual de Campinas · Brazil	Kingston Public Hospital · Jamaica	Hosp. U. de Nuevo León "Dr. José Eleuterio González" Mexico	University Hospital Paramaribo · Suriname
Hospital das Clinicas das UFG · Brazil	University Hospital Of The West Indies · Jamaica	Instituto Nacional de Cancerologia (INCAN) · Mexico	National Medical Center · Tajikistan
Centre Hospitalier Universitaire Yalgado Ouedraogo · Burkina Faso	Regional Hospital Kazakhstan	Inst. Nacional de Ciencias Médicas y Nutrición · Mexico	Kilimanjaro Christian Medical Center · Tanzania
Mercy Medical Center · Cambodia	Scientific Center of Pediatrics and Pediatrics Surgery · Kazakhstan	Unidad de Hematología y Transfusión · Mexico	Ocean Road Cancer Institute · Tanzania
Hopital General Yaoundé Cameroon	The Nairobi Hospital · Kenya	Institute of Oncology · Moldova	Ramithibodi Hospital · Thailand
CHU de Yopougon Cote d'Ivoire	The National Centre of Oncology · Kyrgyzstan	First Central Hospital · Mongolia	Siriraj Hospital · Thailand
Centre Hospitalier Monkole · Democratic Republic of Congo	Oncology and Transfusion Medicine Centre Vilnius University · Lithuania	B.P. Koirala Memorial Hospital · Nepal	Campus Teaching Hospital of Lome · Togo
Bairo Pite Clinic Lanud East Timor	Service d'Oncologie C.H.U – H.J.R.A · Madagascar	Patan Hospital · Nepal	Joint Clinical Research Center · Uganda
North Estonia Medical Center · Estonia	College of Medicine & Queen Elizabeth Central Hosp. · Malawi	Hospital Roberto Calderon Gutierrez · Nicaragua	Mulago Hosp. Uganda Cancer Institute · Uganda
Tikur Anbessa(Black Lion) Hospital · Ethiopia	Hospital Ampang · Malaysia	Hôpital National de Niamey · Niger	Inst. of Blood Pathology and Transfusion Med. · Ukraine
Colonial War Memorial Hospital · Fiji	Hospital Miri · Malaysia	Obafemi Awolowo University Teaching Hospital · Nigeria	Scientific Research Inst. for Hem. and Blood Transfusion · Uzbekistan
	Hospital Pulau Pinang · Malaysia	University of Nigeria Teaching Hospital · Nigeria	University Teaching Hospital · Zambia
	Hospital Queen Elizabeth · Malaysia	Nazarene Hospital Papua New Guinea	Parirenyatwa Hospital · Zimbabwe



MAX ACCESS SOLUTIONS 

## Wraparound Support

Wraparound support is key to the success of Max Access Solutions: we monitor each patient's medication needs in our real-time tracking system, provide one-on-one care, connect them to local patient groups, and fund community education and diagnostic access.

### Real-Time Tracking

The Max Foundation developed its own real-time program management tool – Patient Access Tracking System (PATS®) – that can be used simultaneously by our own program team *and* by treating physicians at partner institutions. Creating this sophisticated tool that can operate in low-resource settings has put

The Max Foundation ahead of the curve in providing a complete, end-to-end access solution. PATS® is able to support the program on one end improving patients' ability to comply with treatment, while on the other end supporting the implementation of successful planning and forecasting models.

### Patient Support Program

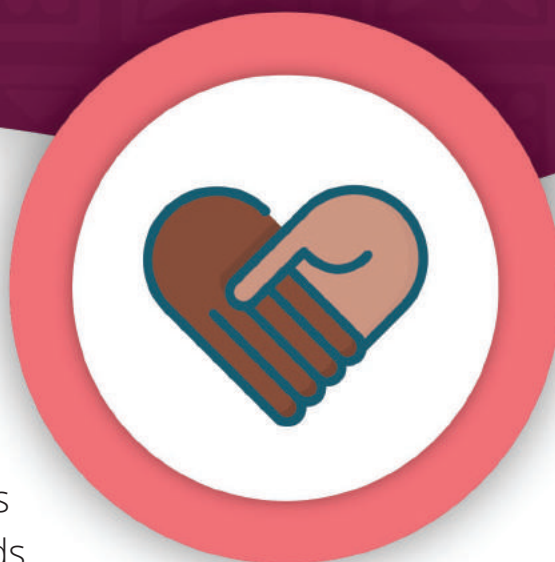
For people living with cancer, finding a balance between daily cancer care and living without worry is vital. Our Day by Day support program is implemented through regular phone calls, distribution of informational materials and, in specific cases, patient

support meetings and disease workshops hosted by our local representative in the patient's country. Knowing that some kinds of cancer have become chronic conditions, attending to both the short- and long-term needs of patients and families is critical.



*"Access to treatment is a challenge and we do our best to improve outcomes by getting people the medication they need – but our work doesn't stop there. Once a patient starts treatment, we stay in close contact with them and their families through our support programs, providing information, guidance, and care along the way."*

—Inés García González, Region Head for Latin America



## Increasing Diagnostic Access

One of the biggest barriers to cancer treatment access in low- and middle-income countries is the shortage of molecular diagnostic tools such as polymerase chain reaction (PCR) testing. In addition to its diagnostic function, PCR testing is also the best way to monitor a patient's ongoing response to treatment, but many countries lack access to – or even awareness of – these critical tools. So we've started several initiatives to help close the gaps:



### My PCR

In 2017, we developed an advocacy toolkit for leaders of patient associations and provided 27 grants to patient associations for PCR awareness activities – all through My PCR ([mypcr.org](http://mypcr.org)).



### A Preferential Pricing Agreement

Through a preferential pricing agreement with Cepheid, we channeled 250 test kits to hospitals and clinics, providing diagnostic access to 2,500 patients in 2017.



### Spot On CML

Through a diagnostic partnership with the Fred Hutchinson Cancer Research Center, we made it possible for 61 patients to access free testing using dried blood samples on paper cards – a method pioneered by the Radich Lab.

*"Twice a month I travel many hours by bus from Santo Domingo, to Santiago, accompany patients to get their blood samples, and bring the samples back to Santo Domingo so they can be PCR tested at Hospital Heriberto Pieter, where the GeneXpert machine is located."*

—Nilexis Bernard Rodríguez,  
Program Coordinator, Dominican Republic



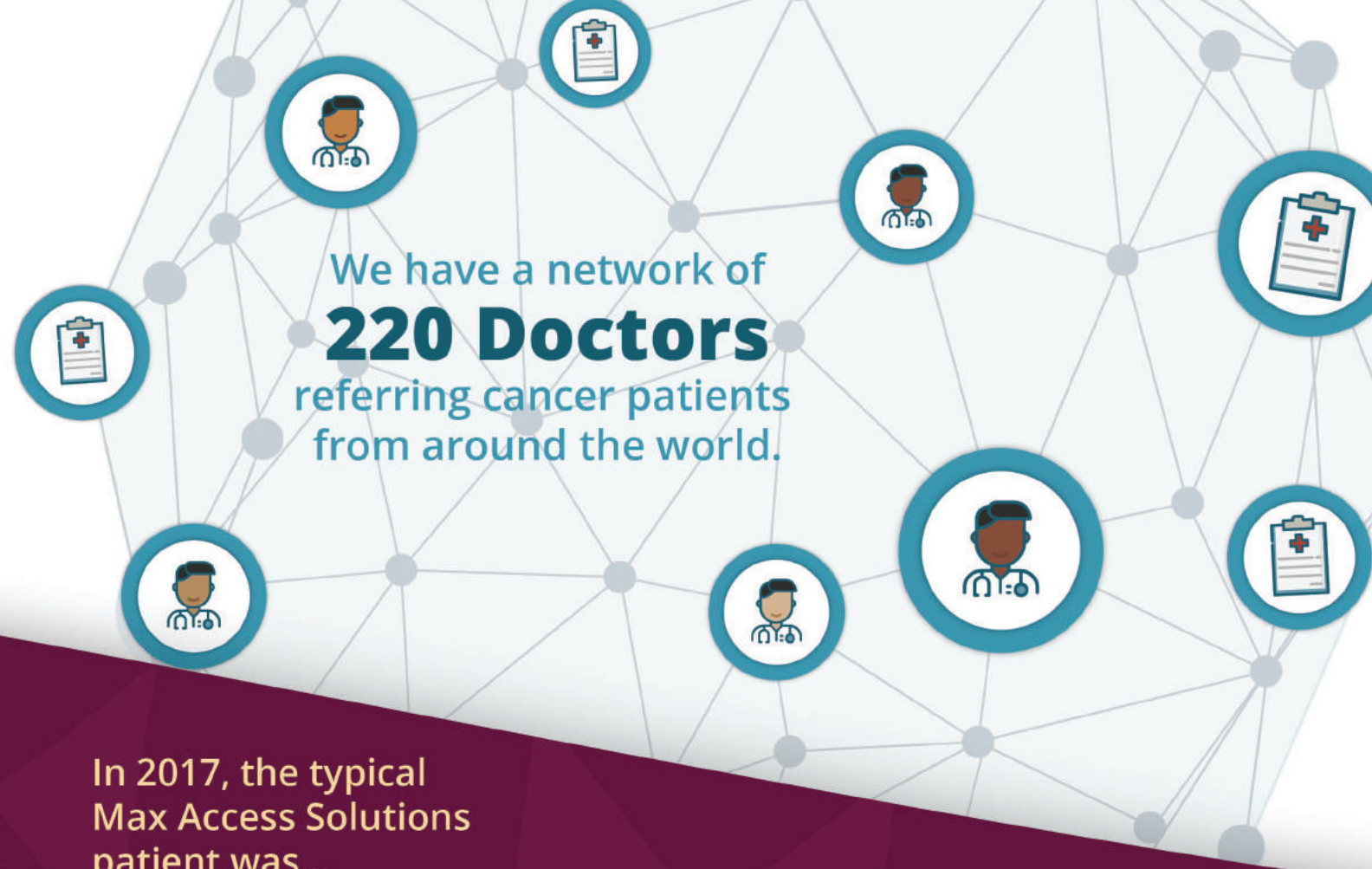
Program Coordinator Nilexis Bernard Rodríguez boards a cross-country bus with her cooler of patient blood samples for PCR testing.



# 2017 at a Glance




We delivered  
**713,695**  
**daily doses**  
into the hands of patients



In 2017, the typical  
Max Access Solutions  
patient was...

 Male, 38-40 Years  
Old At Diagnosis

 Diagnosed with Chronic  
Myeloid Leukemia

 Living in Africa

We tracked over  
**11,000**  
**Patients**  
in PATS®, our real-time  
system specially developed  
to monitor each patient's  
treatment lifecycle.



We oversaw...



...drug shipments to...



 **66 Countries**



# Financials

The planned transition of the GIPAP program to CMLPath to Care™ under the umbrella of the Max Access Solutions model, launched in July of 2017, required the organization to stock up its inventory to ensure a continuous supply of medicines to patients in the program.

While 50 out of the 67 countries to be transitioned did so in 2017, at year end, the organization was holding a substantial volume of inventory on hand while we sought import permits and other necessary regulatory documentation for distribution at the different sites.

Revenue	AMOUNT	PERCENTAGE
Gifts-In-Kind · Pharmaceuticals	190,595,434	96.6%
Corporate Services Agreements	1,070,985	0.5%
Contributions, Grants & Sponsorships	5,386,877	2.7%
Diagnostic Program Revenue	312,689	0.2%
Other Income	9,127	0.0%
<b>Total</b>	<b>197,375,112</b>	<b>100.0%</b>

Expenses	AMOUNT	PERCENTAGE
Program Services Expense	54,727,479	97.8%
Management & General	742,814	1.3%
Fundraising	482,926	0.9%
<b>Total</b>	<b>55,953,219</b>	<b>100.0%</b>

*“At the 2017 Annual Board meeting, one of the Directors called our growth chart a ‘hockey stick’ in reference to its steep curve. I believe this is a very accurate representation of the truly transformative year, as we took on the role of drug delivery, which brings added responsibility in asset management. We look forward to increasing our impact on behalf of patients everywhere.”*

*–Patricia Pearce, Chief Financial Officer Consultant*

## To Our Partners

We offer our heartfelt thanks to our partners and friends for sharing in our mission.

### Corporate Partners

AbbVie	Incyte	Otsuka
Amgen	Janssen	Pfizer
ARIAD	Novartis	Takeda
Bristol-Myers Squibb		

### Friends of The Max Foundation

Andrew W. Lyon Travel	Fred Hutchinson Cancer Research Center	Make Beautiful
Beresford Booth, PLLC		Rainier Masonic Lodge
Bourne Capital Partners, LLC	Global Fiberglass Solutions, Inc.	Tanner Pharma Group
Cepheid	Greenwood Masonic Lodge	The Woodshed Gallery
Choice Organic Teas	La Minutera Seafood Restaurant	UNITS Moving & Portable Storage Seattle & Bellevue
Davis Wright Tremaine LLP	Latin America Leukemia Net	
Expertasia Marketing Consulting & Services Co.		

## Valuation of Gifts-In-Kind

Prior to 2017, The Max Foundation’s fair value of donated pharmaceuticals was based on prices from Thomas Reuters Red Book Average Wholesale Price (AWP). During 2017, The Max Foundation obtained fair value data from a third-party source which reflects wholesale prices available in multiple relevant international markets. The gifts-in-kind are recorded, by drug, based on the estimated fair value in the relevant international market of highest volume. During 2017, The Max Foundation modified its agreements with several pharmaceutical companies. Pharmaceutical gifts-in-kind are now donated to The Max Foundation for use in its programs, whereas in prior years the pharmaceuticals were provided directly by the companies to the end users. As a result, the volume and total value of gifts-in-kind recognized in the consolidated financial statements is significantly higher in 2017.

### Gifts-In-Kind Revenue & Expense





# Donors Make the Difference

Your support allows us to extend the reach of our programs and expand the services we offer to people facing cancer. Every dollar given, hat knitted, event hosted, and story shared brings a patient closer to accessing treatment – and access to treatment is access to life. To honor those who have been so generous and faithful in their support, here’s a look back at some of the ways our community supported patients in 2017.

**The Max Global Experience** is a new fundraising and engagement event in which supporters travel together with us to gain a better understanding of our work, meet patient leaders, and share in an unforgettable adventure. In 2017, 23 participants traveled to Malaysia to climb Mount Kinabalu with local cancer survivor and patient advocate, Tony Leo. Leading up to the event, participants tapped into their personal networks, introducing us to supporters who donated more than \$105,000 toward education, awareness, and treatment access.



**With Love in Every Stitch** is a program inviting our community to donate hand-knit hats for children facing cancer. We received 374 hand-made items in 2017 and sent them to patient organizations to give out in hospitals in Mexico, Chile, Mongolia, and Ethiopia – all thanks to the tireless work of our knitters.



*“It is crushing to learn you have cancer. In the moment it is a huge truth to take in. Once you pass that moment, it’s what you do next that counts – this is a chance for us to be better and stronger than before, to inspire and bless others!”*

–Tony Leo, Patient Leader, Malaysia

*“We meet patients at their lowest point, on the first step of facing cancer. When you help a patient get the treatment they need, this depression is turned around, filling them with hope and possibility. By supporting their care, you are turning their life around completely.”*

–Priyanka Kandalgaokar, Program Officer, India

**Chai for Cancer USA**, an initiative started by our South Asia Region Head, Viji Venkatesh, raises funds and awareness for people facing cancer in India. In 2017 we mailed chai tea to more than 400 participants so they could join in a virtual adda, raising a cup to benefit patients in India.



Our **20th Anniversary Celebration** was held in Seattle, Washington, on Max’s Day – October 19th. Nearly 200 friends, partners, and guests from around the world joined us for a night of festivities and reflection. Staffed by community volunteers, the event brought in \$100,000 in sponsorships and donations – and the first \$20,000 was matched by a generous supporter.



## To Our Donors

We are grateful to all the new friends we made in 2017, and the old friends who have been by our side for years. We thank you all for sharing in our daily mission and our nightly dream – creating a world in which all people face cancer with dignity and hope. Your ongoing support has a direct impact on patients and their families. By giving them access to cancer treatment, you are giving them the gift of time with loved ones.



# Our Team

## BOARD OF DIRECTORS

Paula Boulton  
*Board President*  
*Principal at PTB Consulting LLC*

David Tingstad  
*Board Secretary*  
*Beresford Booth PLLC Law*

Robert Farmer  
*Board Member*  
*CML Survivor & Photographer*

Grant Rubenstein  
*Board Member*  
*Rosen-Harbottle Commercial Real Estate*

Jerry Scott, CPA  
*Board Treasurer*  
*Chartered Global Management Accountant*

Pat Garcia-Gonzalez  
*Chief Executive Officer*

Tracey Higgins  
*Board Member*  
*Edmonds Community College*

## MEDICAL ADVISORY BOARD

*Hematology Advisors*

Michele Baccarani, MD

Jorge E. Cortes, MD

Brian J. Druker, MD

Francois Guilhot, MD

Andreas Hochhaus, MD

Timothy Hughes, MD

Michael J. Mauro, MD

Javier Pinillia-Ibarz, MD

Delphine Rea, MD

Neil P. Shah, MD

Moshe Talpaz, MD

*Oncology Advisors*

Matías Chacón, MD

George D. Demetri, MD

Peter Reichardt, MD

Jonathan Trent, MD

## STRATEGIC INNOVATION ADVISORY BOARD

Carolyn Blasdel, FNP-BC

R. Banks Bourne, MBA

Rhonda Curry

Gilberto de Lima Lopes, Jr., MD

Michele Galen, J.D.

Teresa Guillien, MPA

William E. Heisel

Michael Mandola, PhD

Jerald Radich, MD

Carlos Rodriguez-Galindo, MD

Lawrence N. Shulman, MD

Andy Stergachis, PhD

Kristofer Rogers

## LEADERSHIP TEAM

Pat Garcia-Gonzalez  
*Chief Executive Officer*

Erin Schwartz  
*VP of Global Engagement*

Inés García González  
*Region Head Latin America*

Mei Ching Ong  
*Region Head Asia Pacific*

Danielle Matia  
*Region Head Africa & Middle East*

Viji Venkatesh  
*Region Head South Asia*

Ann Kim Novakowski  
*Associate Program Director*

J. Michael Wrigglesworth  
*Director of Global IT Solutions*

## GLOBAL HEADQUARTERS SEATTLE, WASHINGTON, USA

Craig Anderson  
*Director of IT*

Josué Blanco  
*Senior Brand Manager*

Barbara Carpenter  
*Executive Assistant*

Courtney Czarnecki  
*Administrative Assistant*

Lorie Gail  
*Consulting Controller*

Paula Lacy  
*Administrative Assistant*

Scott Lutz  
*Accountant Assistant*

Meg Mager  
*Senior Program Manager*

Patricia Pearce  
*CFO Consultant*

Kristina Pfeil  
*Human Resources Consultant*

Winona Rennick  
*Development Manager*

Erin Lindsay Schneider  
*Senior Program Manager*

Scott Shearer  
*Quality Assurance Consultant*

Huey Yeh  
*Controller*

## ARGENTINA

Mercedes Arteaga  
*Regional Program Officer*

Maria Victoria Duhalde  
*Local Program Coordinator*

Melisa Fazio  
*Local Program Coordinator*

## CHILE

Lyat Granati  
*Local Program Coordinator*

## DOMINICAN REPUBLIC

Martha Rosario Molina  
*Local Program Coordinator*

Nilexis Bernard Rodríguez  
*Local Program Coordinator*

## ETHIOPIA

Tenaye A. Ashebir  
*Local Program Coordinator*

## GUATEMALA

Evelyn Berduo  
*Local Program Coordinator*

## INDIA

Ankita Borkar  
*Administrative Executive*

Phillip Fernandes  
*Administrative Assistant*

Santosh Kadam  
*Accounts/Office Manager*

Priyanka Kandalgaokar  
*Program Officer*

Prasad Kothekar  
*Administrative Executive*

Sherly Kochi  
*Volunteer*

Azim Mohd  
*Driver*

Ashika Naik  
*Local Program Coordinator*

Beena Narayanan  
*Program Officer*

Jyotiy Parameshwaran  
*Local Program Coordinator*

Sudha Samineni  
*Program Officer*

Shalini Subramanian  
*Local Program Coordinator*

Vijaya Sundaram  
*Program Officer*

Ameya Surve  
*Program Officer*

Komal Surve  
*Local Program Coordinator*

Vidya Tahilramani  
*Local Program Coordinator*

Anshika Tandon  
*Local Program Coordinator*

Julie Soundarva  
*Housekeeping Staff*

## KENYA

Lucy Mwangi  
*Local Program Coordinator*

## MALAYSIA

Ghai Yein Lee  
*Local Program Coordinator*

Nor Aina Binti Abd Rahim  
*Administrative Executive*

Yee Jia Heng  
*Program Officer*

Shirleen Low  
*Program Officer*

## MEXICO

Cynthia Figueroa Guerra  
*Program Officer*

Mariana Rubi Gonzalez  
*Local Program Coordinator*

## NIGERIA

Adetokunbo M. Bello  
*Local Program Coordinator*

## NEPAL

Sweta Agrawal  
*Local Program Coordinator*

## PHILIPPINES

Nelia Media  
*Program Officer*

## SENEGAL

Mame Fall  
*Local Program Coordinator*

## SOUTH AFRICA

Geraldine Botha  
*Local Program Coordinator*

Catherina Scheepers  
*Regional Program Officer*

## THAILAND

Krittapart Artharn  
*Local Program Coordinator*

Thaned Kairaj  
*Local Program Coordinator*

Wirat Sae-Kuai  
*Program Officer*

Piyapong Siriviriyarnum  
*Program Officer*

## UZBEKISTAN

Sukrob Saliev  
*Local Program Coordinator*

## VIETNAM

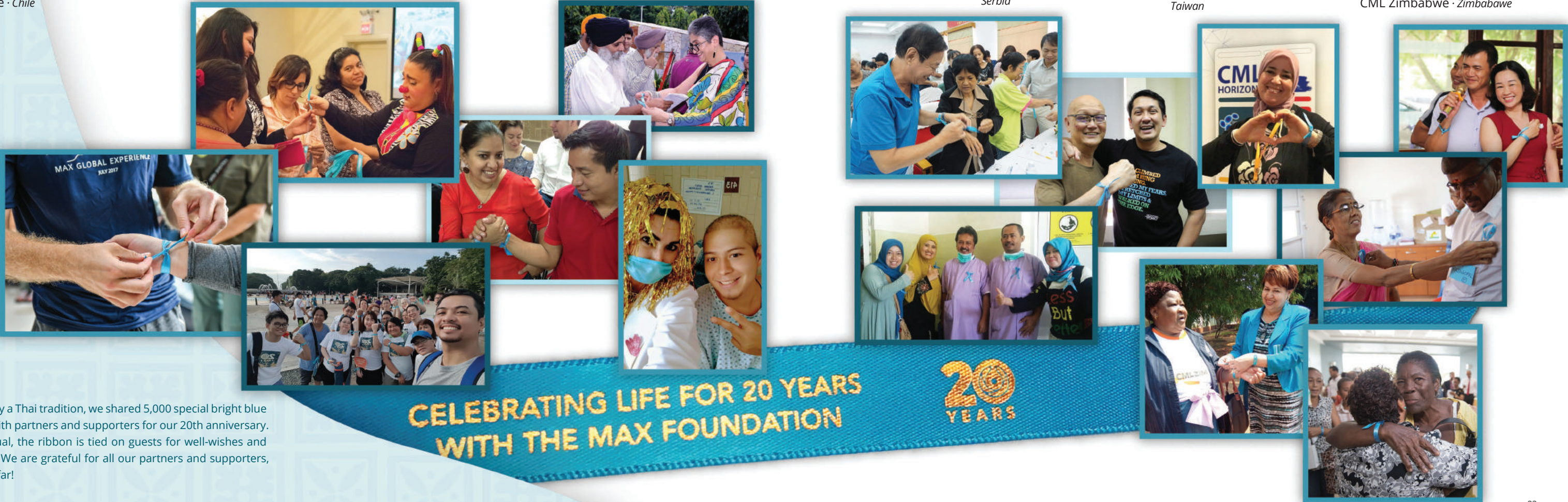
Tang Thi Thanh Thao  
*Local Program Coordinator*



# Patient Associations

What started as a small patient gathering in a hospital in Manila, has evolved into a global network of 77 independent patient associations in 57 countries whose efforts are central to our wraparound support.

Asociación de Leucemia Mieloide Argentina · <i>Argentina</i>	Shanghai Roots and Shoots China	The Alliance of CML Patients of Georgia · <i>Georgia</i>	Association of Patients with Hemoblastoses · <i>Kazakhstan</i>	Grupo Unido de Leucemia A.C. Mexico	MaxCare Nigeria · <i>Nigeria</i>	Crusaders Club Ministry Sierra Leone	Tanzania CML Patient Group Tanzania
CML Patient Association Armenia · <i>Armenia</i>	Fundación Colombiana de Leucemia y Linfoma · <i>Colombia</i>	Chronic Myeloid Leukemia Advocates of Ghana · <i>Ghana</i>	Childhood Cancer Initiative Kenya	Manitas la Pulsera de Leucemia · <i>Mexico</i>	KIRAN · <i>Pakistan</i>	Children's Cancer Foundation Singapore	MaxSmiles · <i>Thailand</i>
Bangladesh CML Supporting Group · <i>Bangladesh</i>	Fundación Esperanza Viva · <i>Colombia</i>	Asociación de Pacientes con Leucemia Mieloide Crónica Guatemala	Henzo Kenya · <i>Kenya</i>	Luz de Vida · <i>Mexico</i>	Patient's Friends Society- Jerusalem · <i>Palestine</i>	Slovenian Lymphoma & Leukemia Patient Association Slovenia	NGO APSBES/DILIGENCE GROUP · <i>Togo</i>
Celebrando la Vida · <i>Bolivia</i>	Agalemo · <i>Costa Rica</i>	Asociación Hondureña de Lucha contra el Cáncer Honduras	Nakuru Hospice · <i>Kenya</i>	National Cancer Council Mongolia · <i>Mongolia</i>	Fundación Unidos contra el Cáncer · <i>Paraguay</i>	Childhood Cancer Foundation South Africa · <i>South Africa</i>	Emirates Association for Cancer Support · <i>UAE</i>
Fundación Esperanza Nueva Bolivia	Un Paso Max · <i>Dominican Republic</i>	Friends of Max · <i>India</i>	Association Fanomezana LMC Madagascar	Association des Malades Atteints de Leucémies · <i>Morocco</i>	Esperantra · <i>Peru</i>	CMLSA · <i>South Africa</i>	Leukemia & GIST Advocacy Fraternity of Uganda · <i>Uganda</i>
ABRALE · <i>Brazil</i>	Esperanza y Vida · <i>Ecuador</i>	ELGEKA West Java · <i>Indonesia</i>	Max Family Society Malaysia Malaysia	Blood Cancer Society Nepal Nepal	Luz de Esperanza · <i>Peru</i>	People Living with Cancer South Africa	Osanna · <i>Ukraine</i>
Groupe d'Appui aux Survivants du Cancer Burkina Faso	CanSurvive · <i>Egypt</i>	YKI Jakarta · <i>Indonesia</i>	Association Leucémie, espoir Mali · <i>Mali</i>	Children Cancer Foundation Nepal · <i>Nepal</i>	Touched By Max · <i>Philippines</i>	Korea Blood Cancer Association · <i>South Korea</i>	Uzbekistan CML Patients League · <i>Uzbekistan</i>
Max Miracle · <i>Cambodia</i>	Asociación Amor a la Vida El Salvador	Israel CML Patients Organization · <i>Israel</i>	Alianza Anticáncer Infantil, A.B.P. · <i>Mexico</i>	Fundación Alas de Vida Nicaragua	Polish Association for CML Patients Aid · <i>Poland</i>	Zero Club CML · <i>South Korea</i>	Asociación de Ayuda a Pacientes Hemato-oncológicos Venezuela
AMACAS · <i>Cameroon</i>	Mathiwos Wondu-YeEthiopia Cancer Society · <i>Ethiopia</i>	IZUMI · <i>Japan</i>	Asociación Mexicana de Leucemia y GIST · <i>Mexico</i>	Association de Lutte Contre la Leucémie · <i>Niger</i>	Associação Portuguesa contra a Leucemia · <i>Portugal</i>	Taiwan Bone Marrow Transplantation Association Taiwan	Max's Vie · <i>Vietnam</i>
Corporación Nacional Maxi Vida Chile · <i>Chile</i>	CML Patients' Foundation of Ethiopia · <i>Ethiopia</i>				A.G.I.L du Sénégal · <i>Senegal</i>		CML Zimbabwe · <i>Zimbabwe</i>
					CML Association of Serbia Serbia		



Inspired by a Thai tradition, we shared 5,000 special bright blue ribbons with partners and supporters for our 20th anniversary. In this ritual, the ribbon is tied on guests for well-wishes and gratitude. We are grateful for all our partners and supporters, near and far!



# 20 Years of Dignity & Hope

Twenty years ago, The Max Foundation began with a simple goal – to connect people in need of cancer treatment with key resources they might never have known about.

Today, we go beyond linking people to existing resources and, instead, create new ones ourselves. We've co-developed the most successful oncological patient access program in history, forged a Humanitarian PACT with five multinational pharmaceutical companies, and just this year, launched a new patient-centered model that could redefine the approach to cancer treatment access in our field.

It feels like nothing short of a dream. And it all started with a brave young boy named Max.

Maximiliano "Max" Rivarola was from Argentina, but he and his family had to travel across the globe to get treatment for his leukemia. Though he was given the best possible care in the United States, the therapies available at the time were not enough to save him.

When Max's family was faced with the end of his life, instead of giving up hope, they marked a new beginning. The family started The Max Foundation to ensure all people could access the very best care, no matter where they live.

Look what happens when we work together.

Look what happens when we hope.



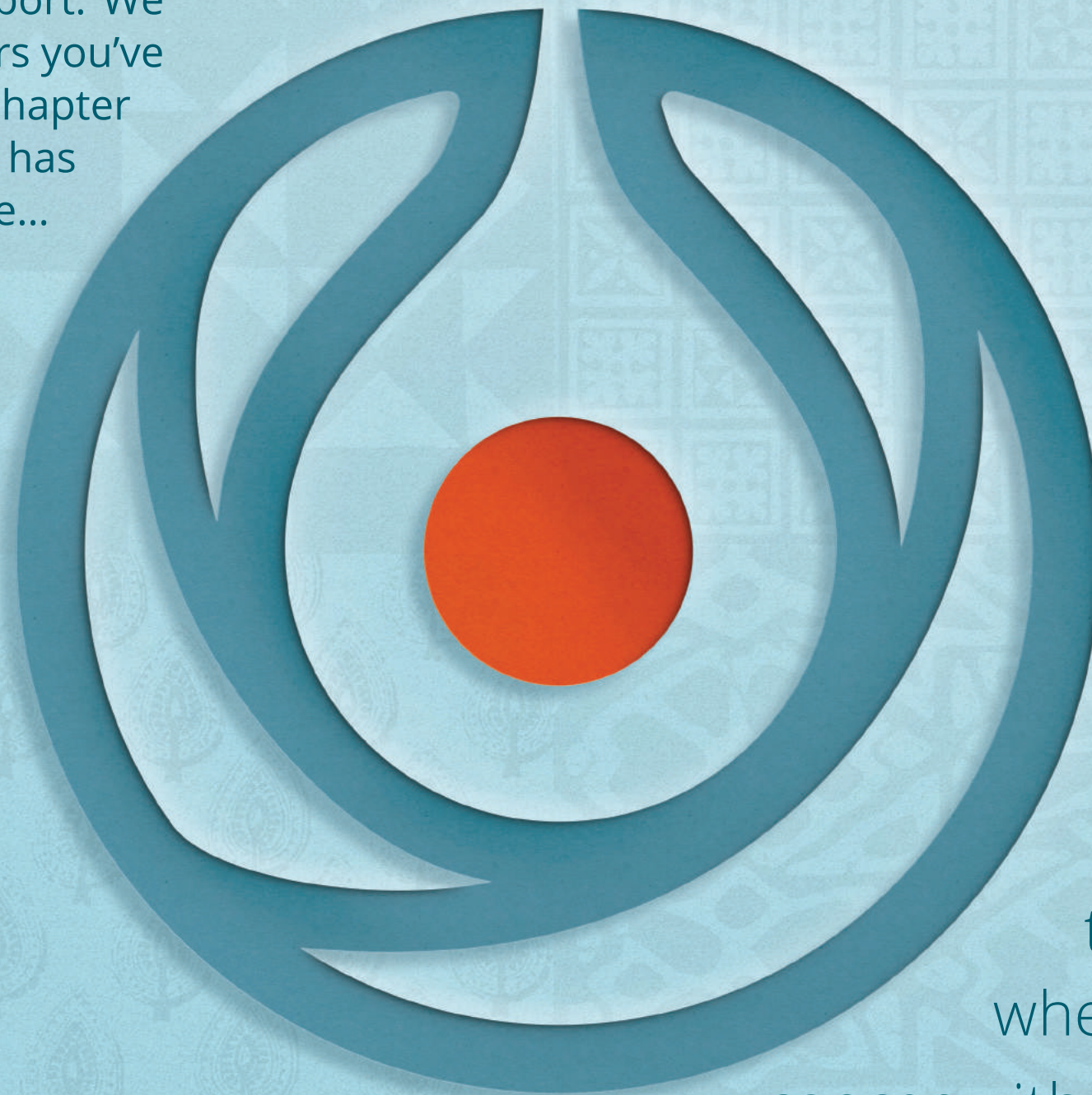
*"Dear 17-year-old Max, today I can say that you have changed the world more than I could have ever imagined...Your name has become a symbol of hope, and I couldn't be more grateful. We will continue the work of The Max Foundation for the next 20 years and beyond, for as long and as strong as we possibly can."*

—Pat Garcia-Gonzalez, in a letter to Max



We hope you see yourself in this report. We certainly see you. For the past 20 years you've been by our side through each new chapter and we thank you for it. Your support has made our dreams come true – one... after another... after another.

Now it is time for a new dream, a new chapter, and the next 20 years.



Together, let's turn  
the page to a world  
where all people face  
cancer with dignity & hope.



## PARTNER WITH US

Access to treatment is access to life. Make a real difference for people facing cancer in low-income countries. Donate today at [themaxfoundation.org/donate](http://themaxfoundation.org/donate)



## THE MAX FOUNDATION

200 NE Pacific Street, Suite 103  
Seattle, Washington 98105 USA  
Phone: +1 425-778-8660

US toll free: 1-888-462-9368  
[info@themaxfoundation.org](mailto:info@themaxfoundation.org)  
[themaxfoundation.org](http://themaxfoundation.org)

## REGIONAL OFFICES

**Africa & Middle East**  
Johannesburg, South Africa

**Asia Pacific**  
Kuala Lumpur, Malaysia  
Bangkok, Thailand (*new*)

**Latin America**  
Buenos Aires, Argentina

**South Asia**  
Mumbai, India